

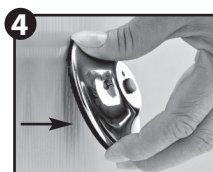
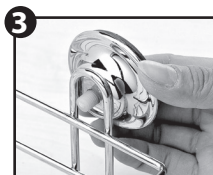


## Handy Tips for installing and caring for your Everloc...

The following information is designed to provide you with a general overview of installing and caring for your Everloc product. Please ensure that you read and follow the instructions included with your Everloc product. Additional information can be found on our website [www.everloc.com.au](http://www.everloc.com.au)

1. Ensure the surface you are applying to is clean and clear of dust. For best results we recommend the use of rubbing alcohol. Ensure surface is completely dry. (fig.1)
2. Apply plenty of pressure to the suction cup base when tightening. This is particularly important when applying Everloc to textured surfaces. (fig.2)
3. Make sure that you tighten your suction cups as tightly as possible. Turn the knob clockwise as far as you can. Always test your Everloc suction before loading with weight.
4. When installing product with multiple suction cups, ensure that the accessory is completely centred over the suction cups. If your product has not been aligned correctly, it may not adhere correctly.  
\*TIP: the silicon on the base of the ring is sticky and can be used to assist you with the placement of your suction cups prior to tightening. (fig.3)
5. Check your suction – we recommend you check your Everloc suction periodically to ensure it is securely fastened.
6. When moving your Everloc and installing it in another location, it is important to clean your suction before re-installing. Simply take your suction cup apart and wash thoroughly under warm water, ensuring any dirt or impurities on the silicon ring and suction cup are removed. (figs 4,5&6). Allow to air dry
7. To clean your Everloc Accessory, simply use a damp cloth to wipe over the wire basket, rail and/or joins. You can place your accessory under running water if required. Do not use any harsh chemicals or abrasives to clean your Everloc as this will damage the chrome surface.
8. Do not use any harsh chemicals or abrasives to clean around your suction cups (e.g. Do not use bleach around Everloc in the shower) as the chemicals can damage the silicon component and cause the product to fail.

*Everloc and the Retailer are not responsible for any damage resulting from any misuse or incorrect installation of the product. Do not use the product as a grab rail. Do not overload the product.*



[www.everloc.com.au](http://www.everloc.com.au)  
Email: [info@everloc.com.au](mailto:info@everloc.com.au)